

Trade with Pat ROBOT

Installation Guide (MetaTrader 4 & 5)

Step 1: Broker / Platform Installation

In order to use the Trade with Pat ROBOT, or any other robot, you need a BROKER.

You can trade:

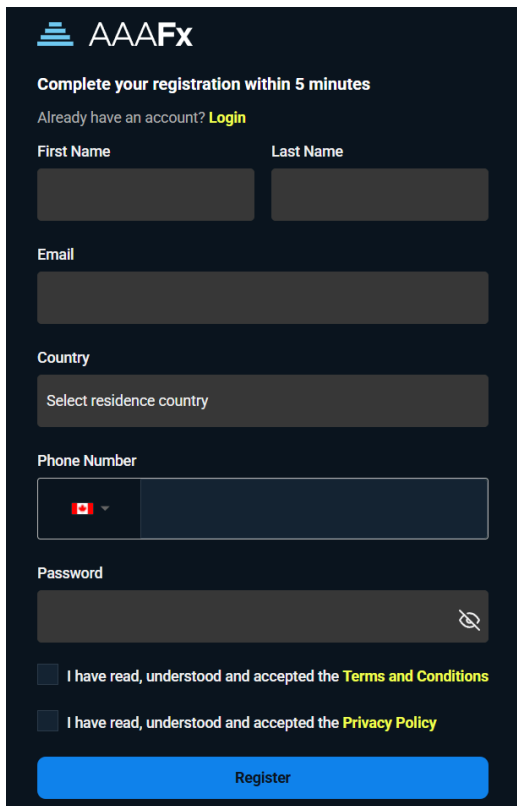
- [Demo accounts](#)
- [Live accounts](#)

That's up to you.

The robot is compatible with ANY MT4 & MT5 broker.

Our recommended brokers are:

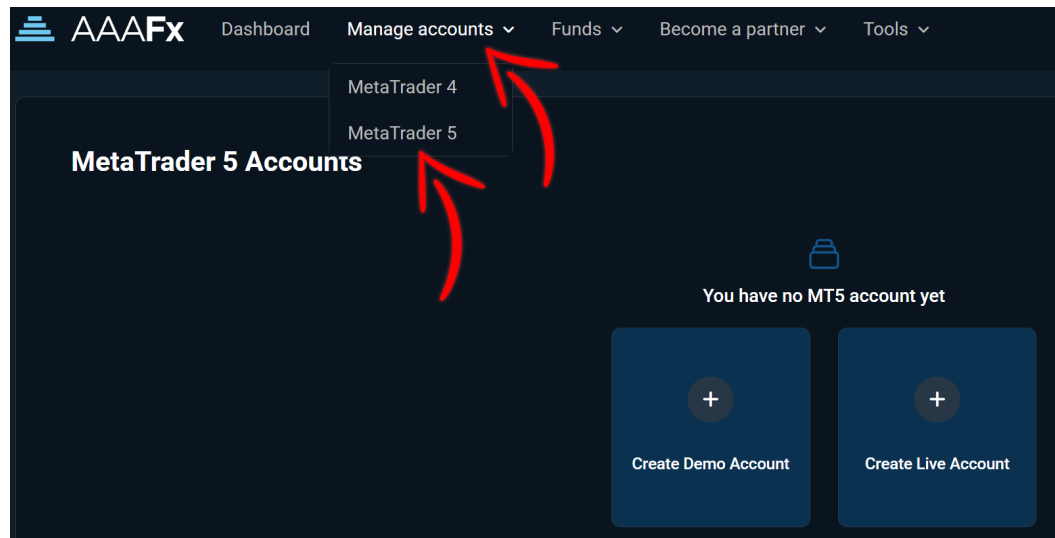
1. [AAAFX Broker](#) (click)
2. [Coinexx Broker](#)
3. [Fyntura Broker](#)

The image shows a registration form for AAAFx on a dark background. At the top left is the AAAFx logo. Below it, the text "Complete your registration within 5 minutes" is displayed. A link "Already have an account? Login" is provided. The form contains several input fields: "First Name" and "Last Name" (two separate boxes), "Email" (one box), "Country" (a dropdown menu with "Select residence country" as the placeholder), "Phone Number" (a box with a Canadian flag icon and a dropdown arrow), and "Password" (a box with a toggle icon). At the bottom, there are two checkboxes: "I have read, understood and accepted the Terms and Conditions" and "I have read, understood and accepted the Privacy Policy". A blue "Register" button is at the very bottom.

Fill out the registration form.

Login to AAAFX.

Click Manage Accounts -> MetaTrader 5



Create either Demo Account or Live account

These are the settings I use for a Live Account:

Create Live Account

×

Platform

MetaTrader 5

Account Type

ECN Plus

Min. Deposit: \$1000

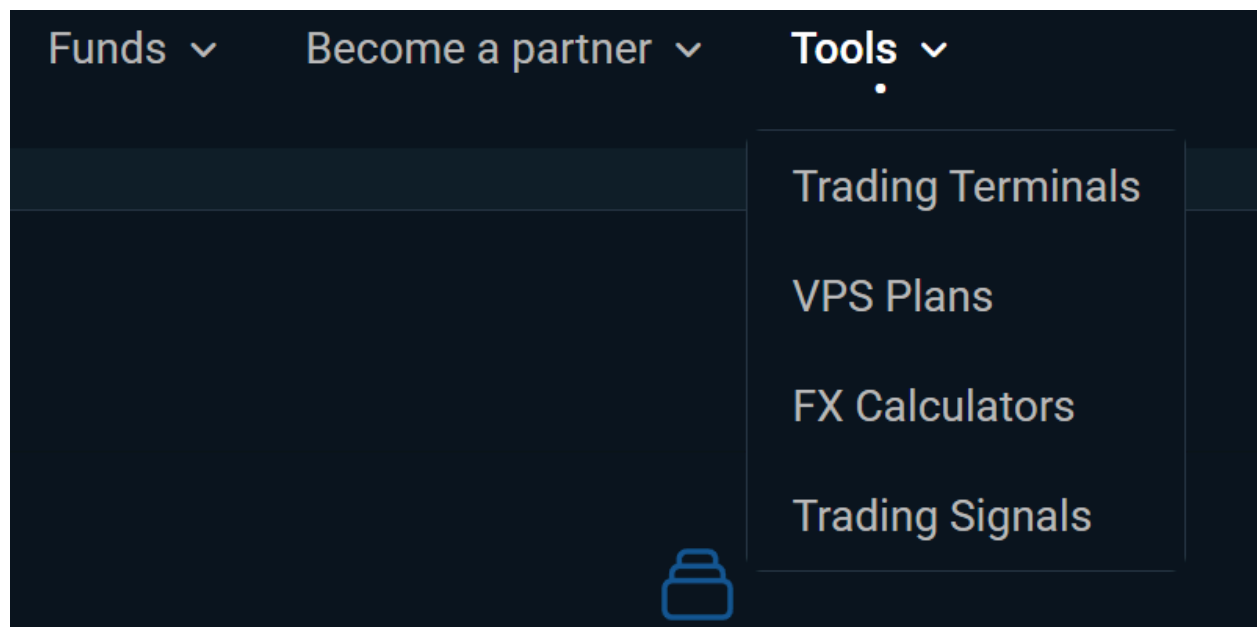
Leverage

500X

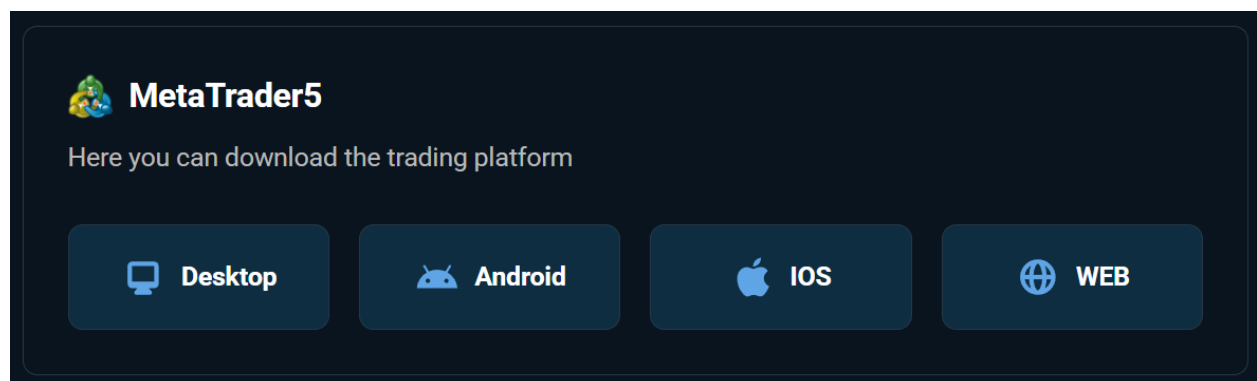
Account Base Currency

USD

Click TOOLS

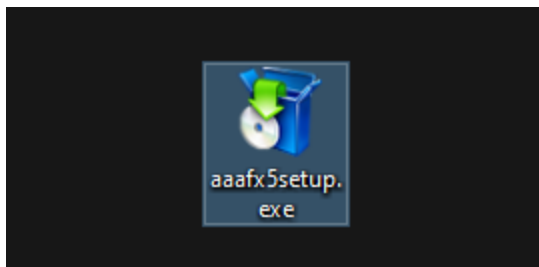


Click Trading Terminals

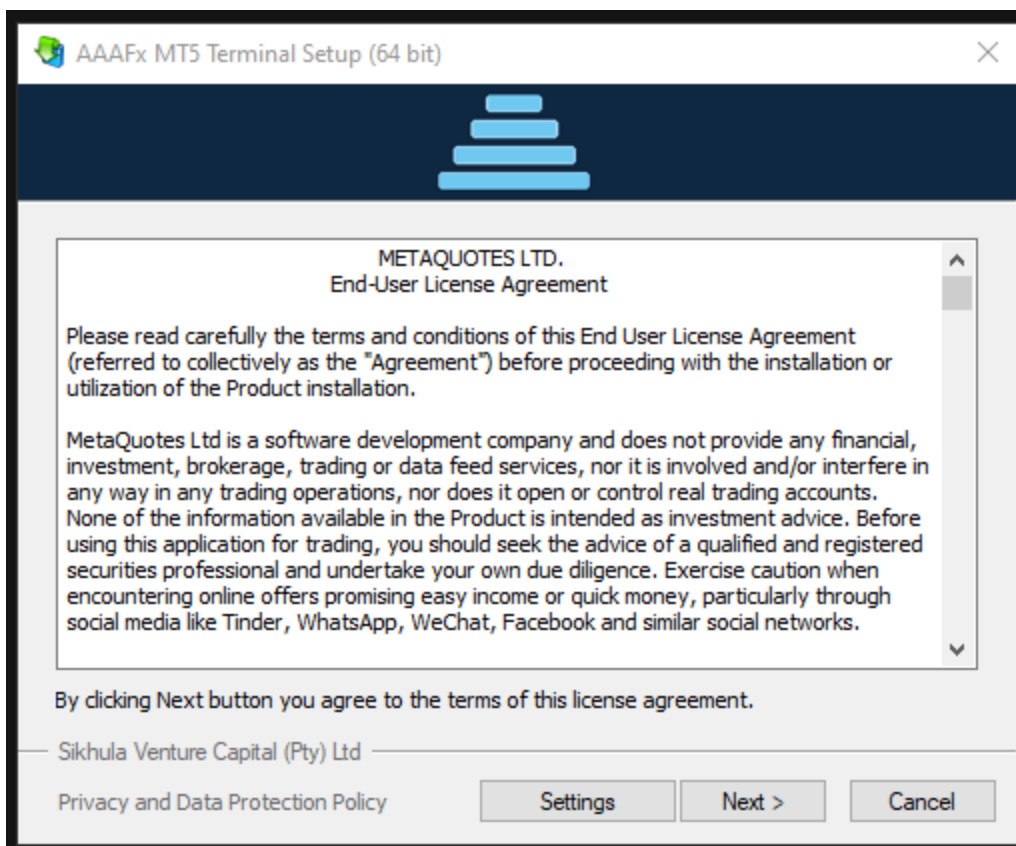


Select MT5 for Desktop or IOS if you're on MAC

You can download this to your Computer or your Forex VPS if you use one ([more in the members area about this](#))

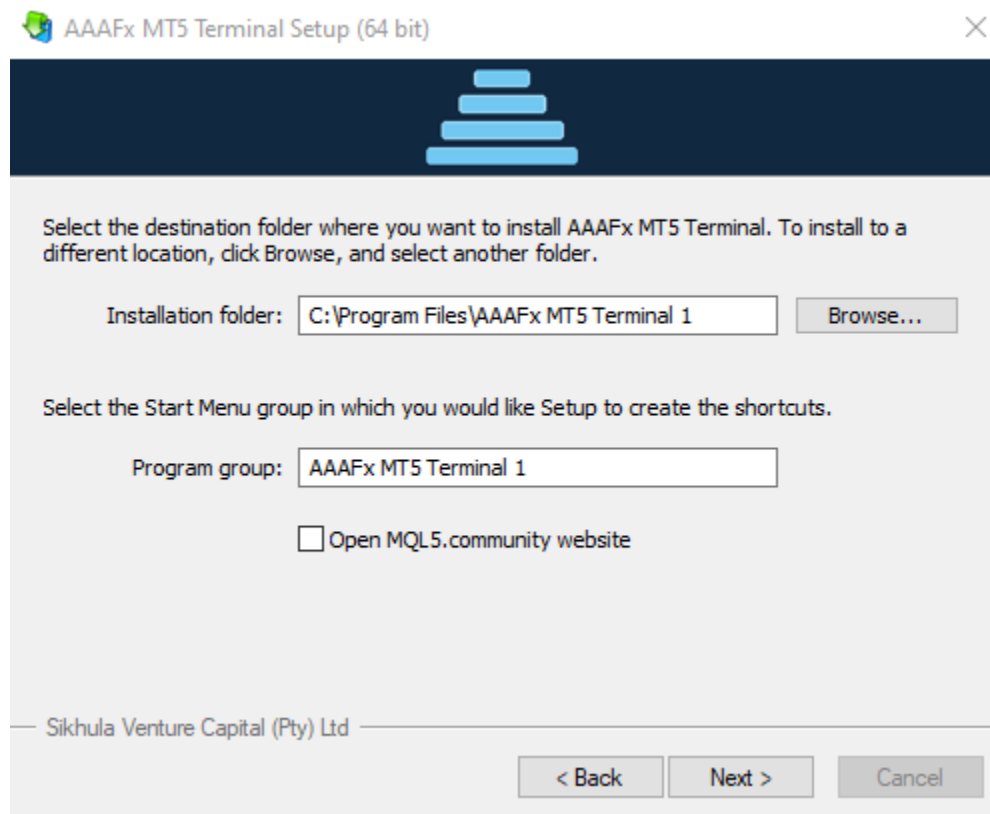


Double click the MT5 setup



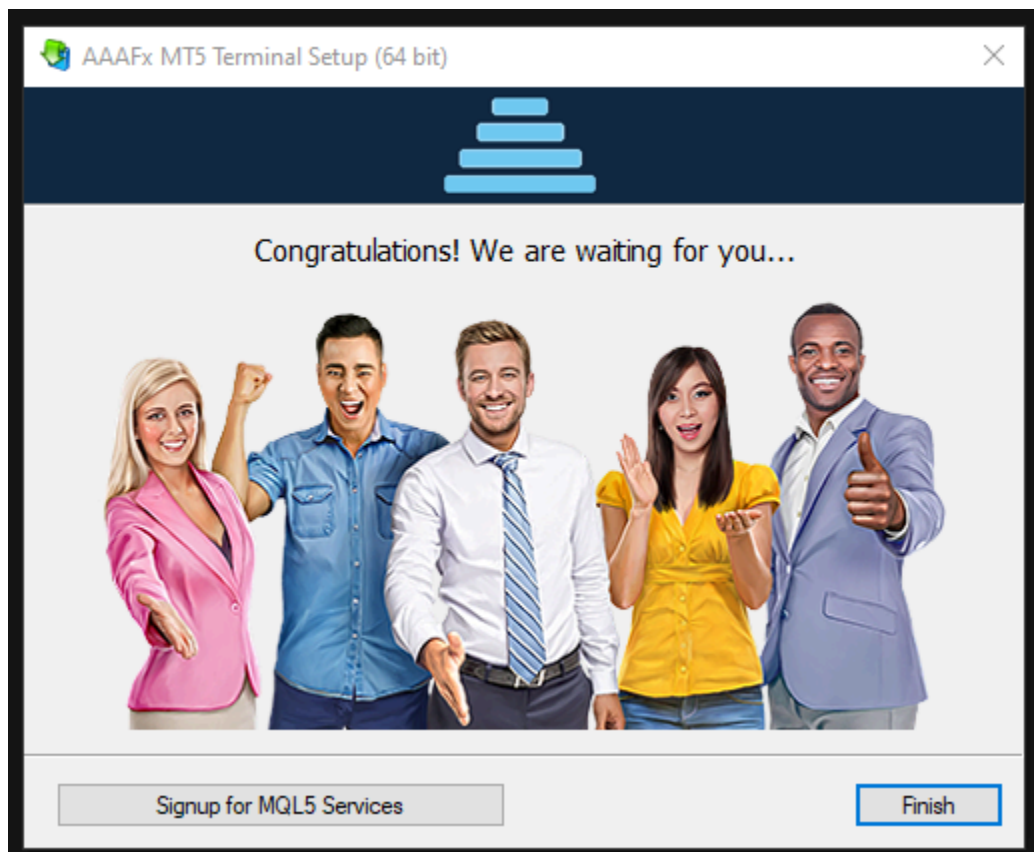
Click Next (or settings to select the folder where you want to install the platform)

If you want to install MT5 3-4 times and run 3-4 tests which we recommend, then click settings.

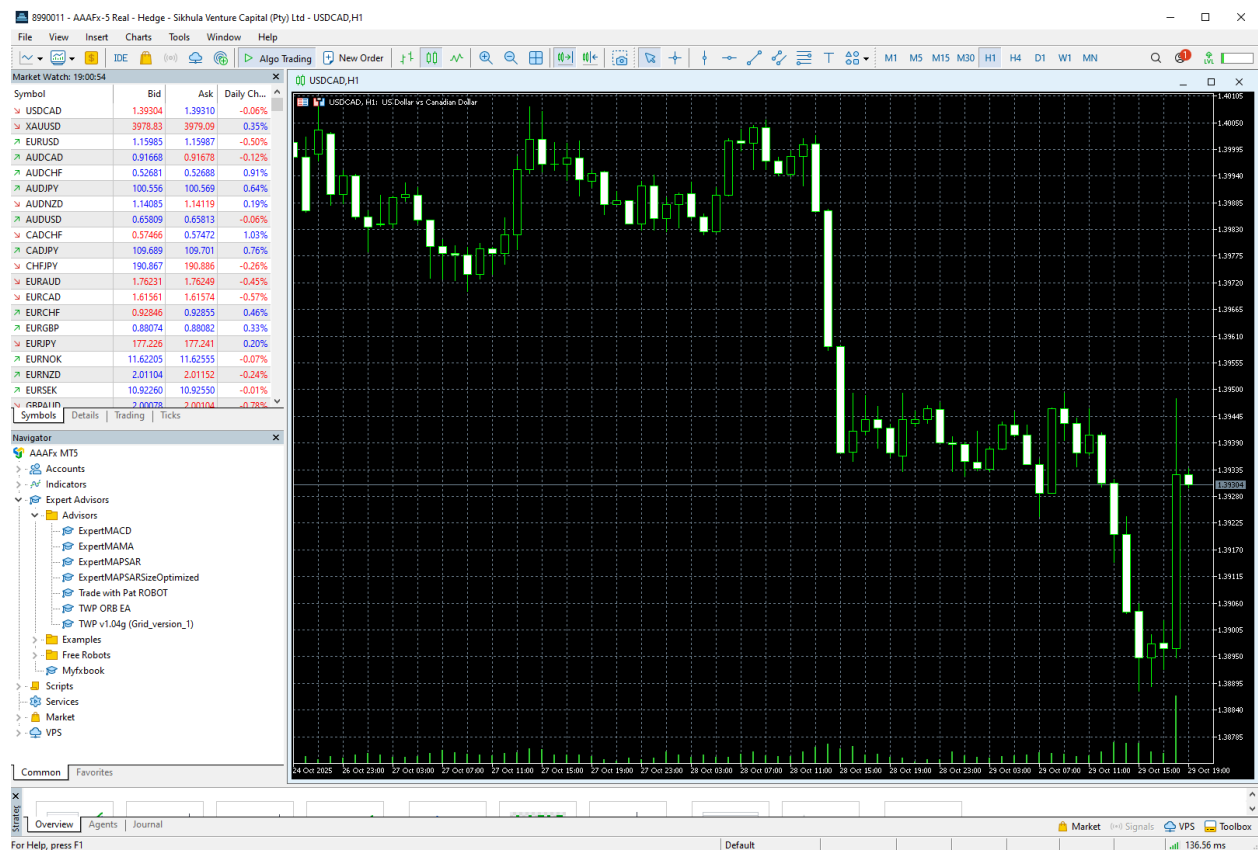


Then you can set install folder to terminal 1, and install another to terminal 2, and so on to get 3-4 platforms for your tests.

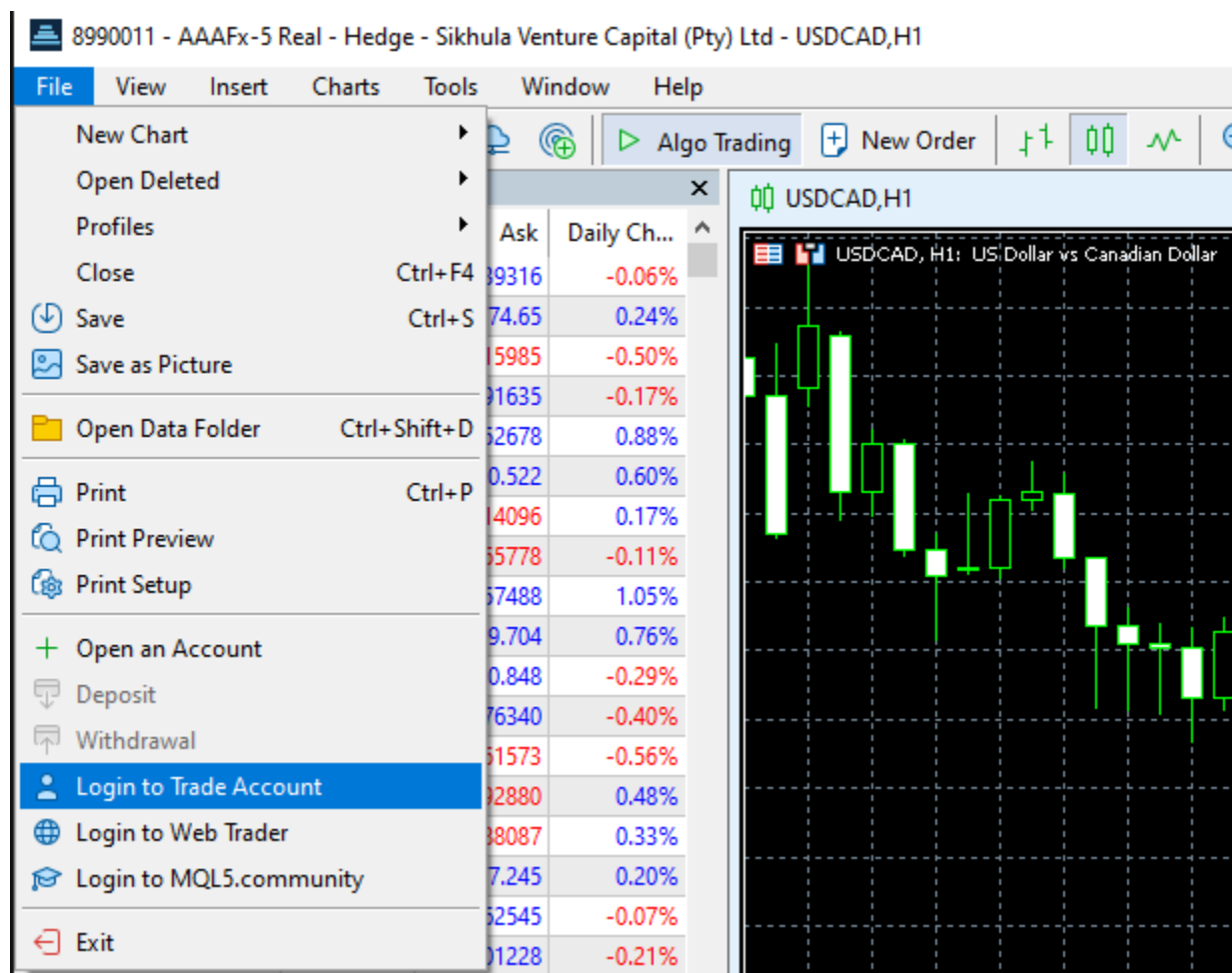
This is a good idea because you may want to test 3-4 different settings or 3-4 different assets like GOLD, NASDAQ, EURUSD & GBPUSD then pick which one you prefer to trade live.



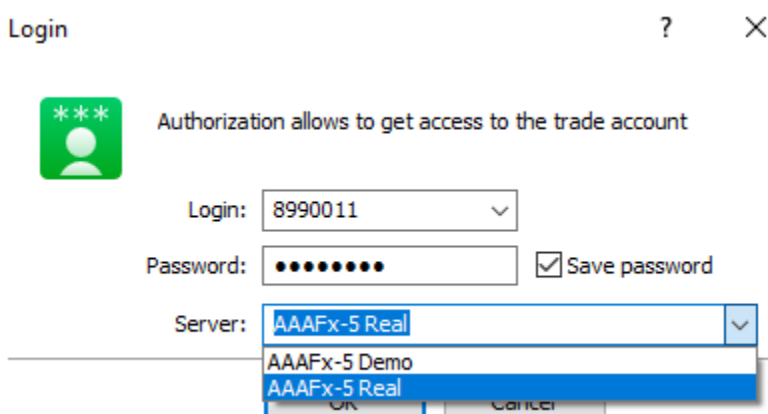
Click Finish



Now you have your platform where you will place trades



First, you will want to click FILE -> LOGIN TO TRADE ACCOUNT



Here you will enter your LOGIN and PASSWORD (AAAFX emails this to you after you create the account)

Then select the server, REAL or DEMO, whichever you created.

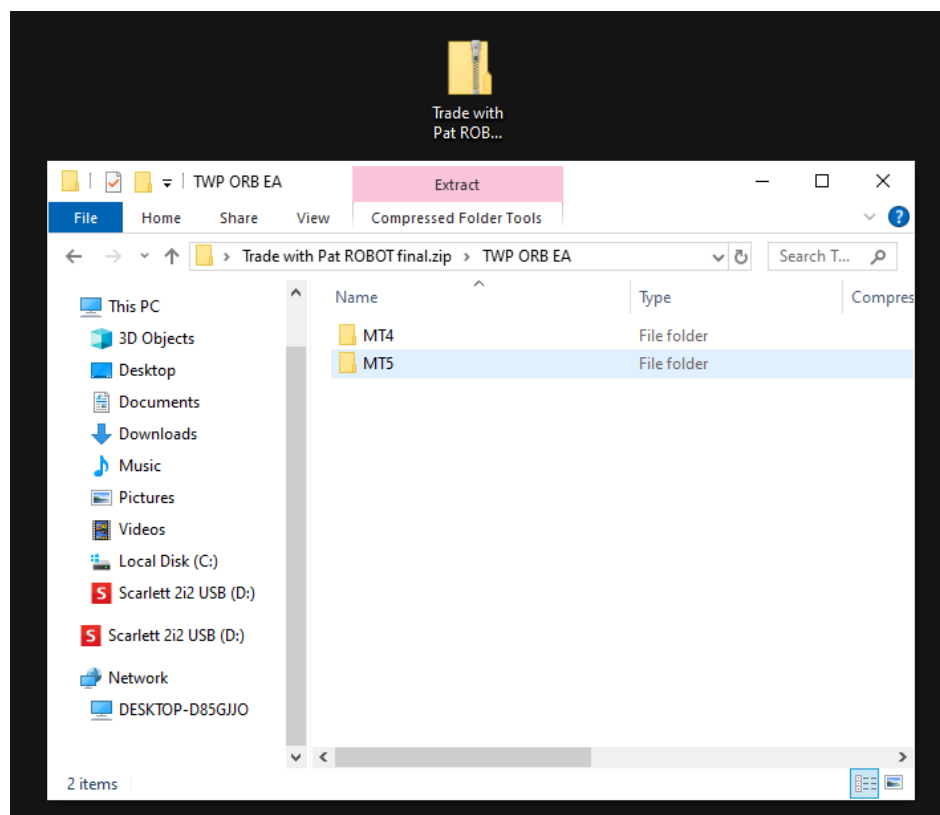
Step 2: Robot Installation

Go to the [Members Area \(CLICK\)](#) to download the robot.

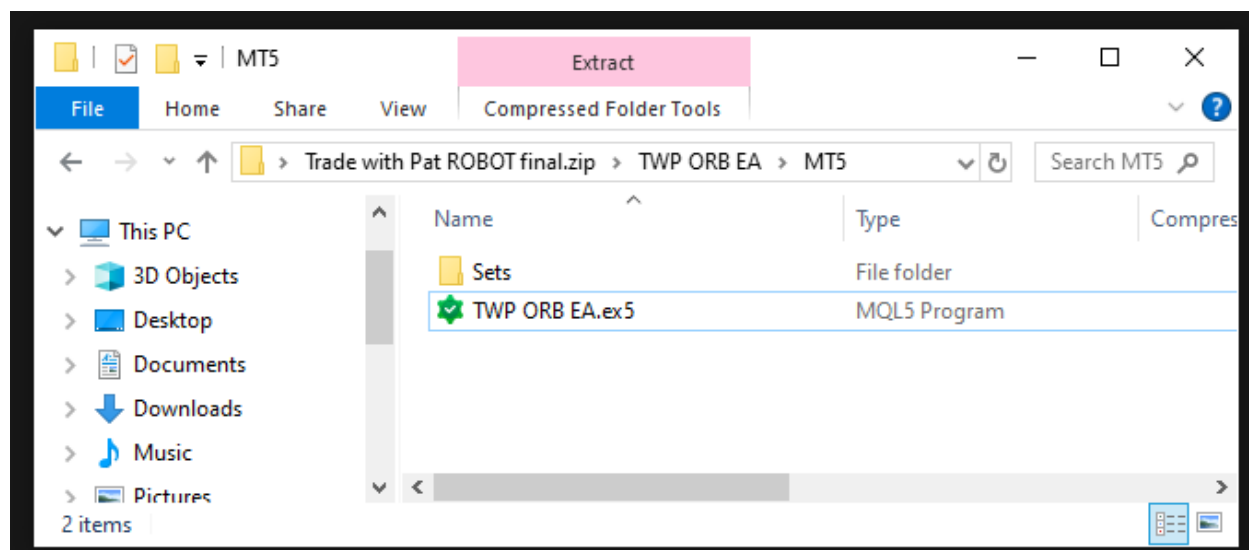
Step 3: Download & Installation

Scroll to this section and click the button for the LATEST version

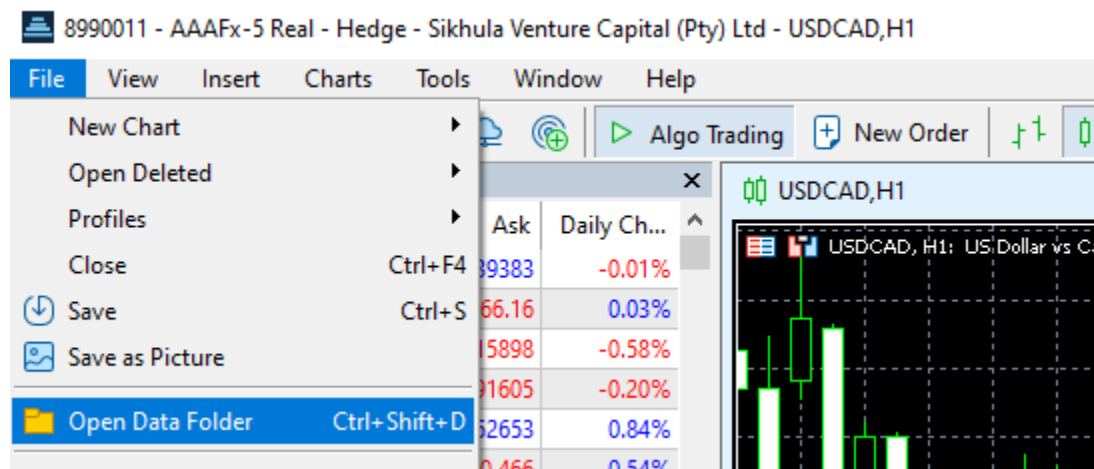
Trade With Pat ROBOT Download



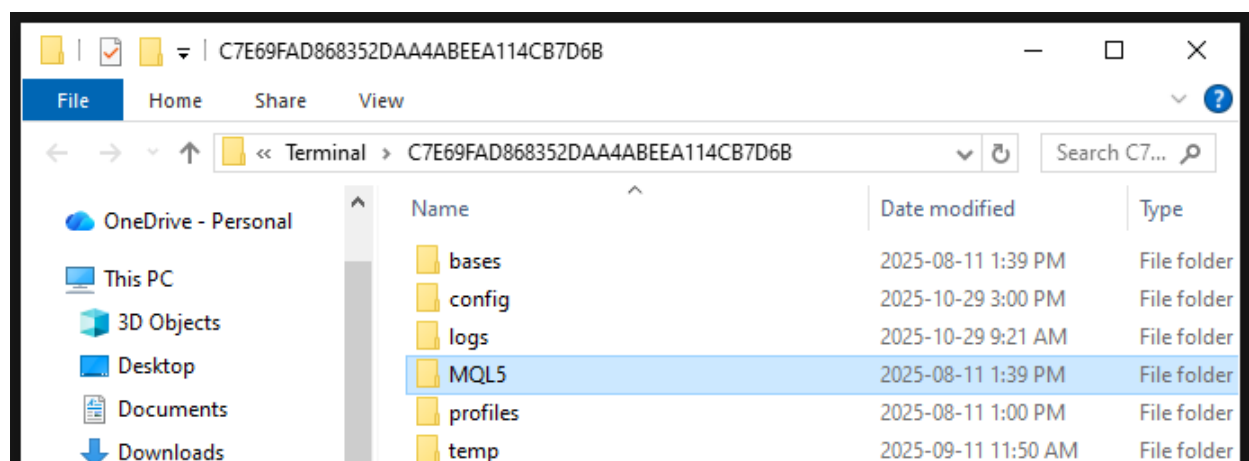
Select either MT4 or MT5 in the zip file



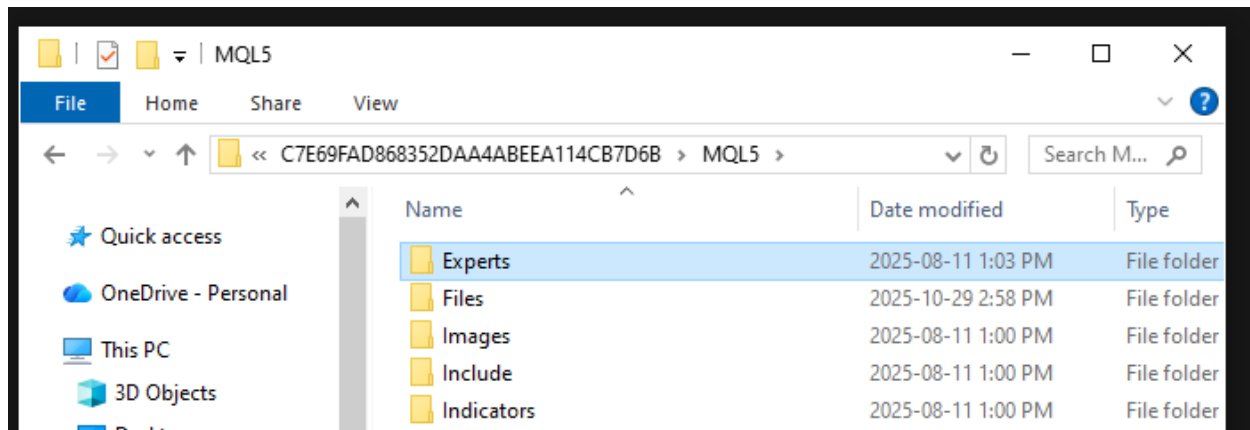
Then go back into MT5



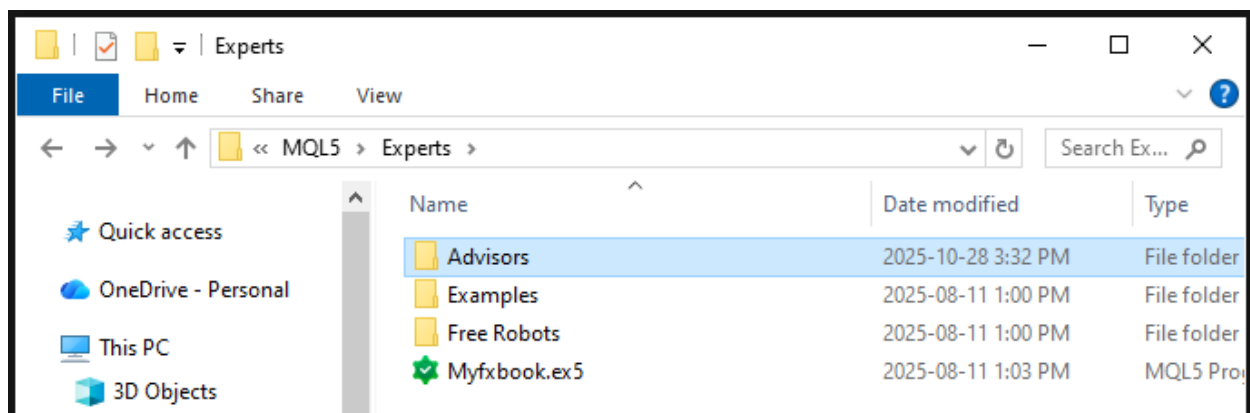
Click FILE -> OPEN DATA FOLDER



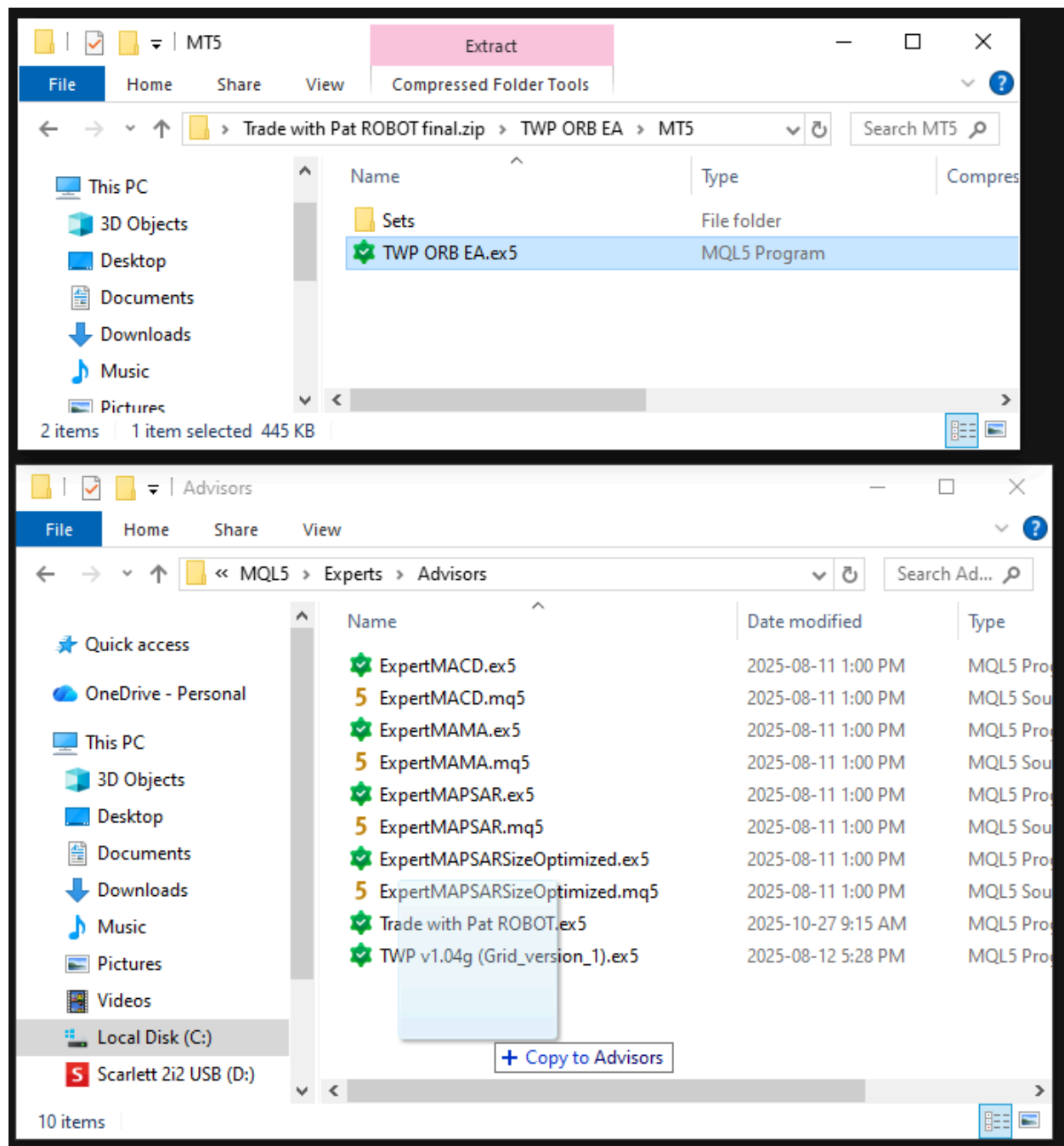
Click MQL5



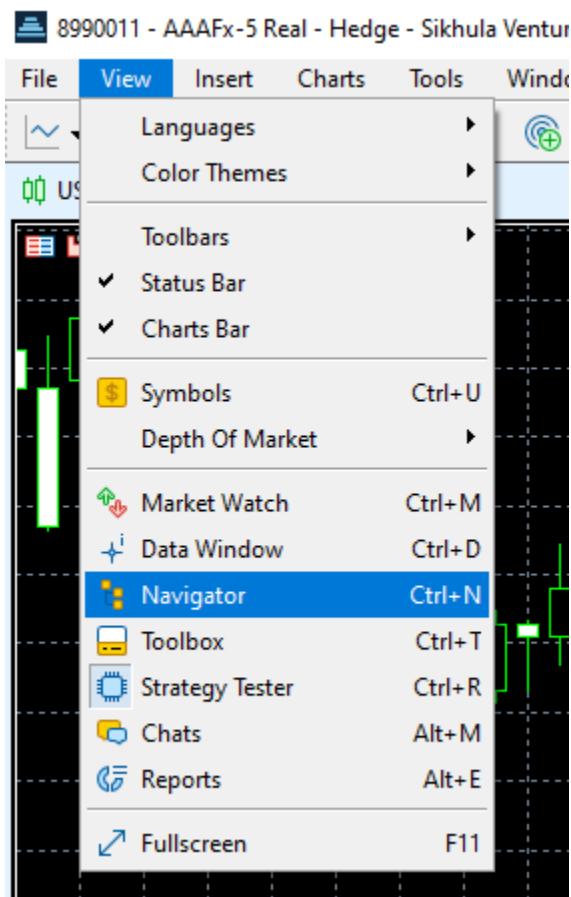
Click Experts



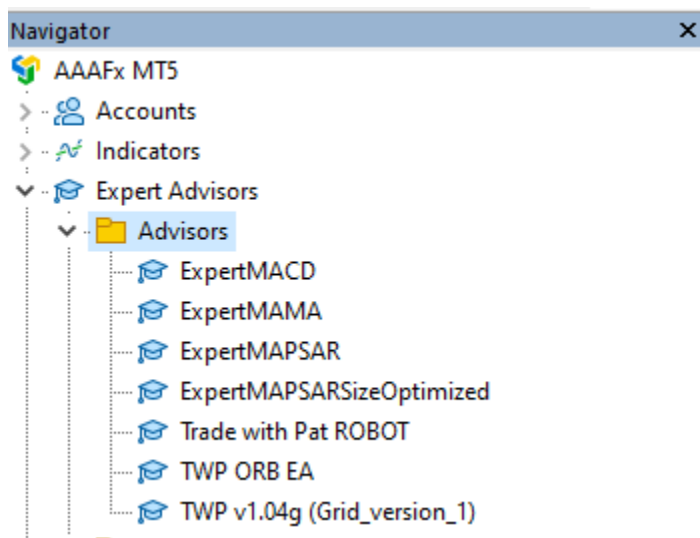
Click Advisors



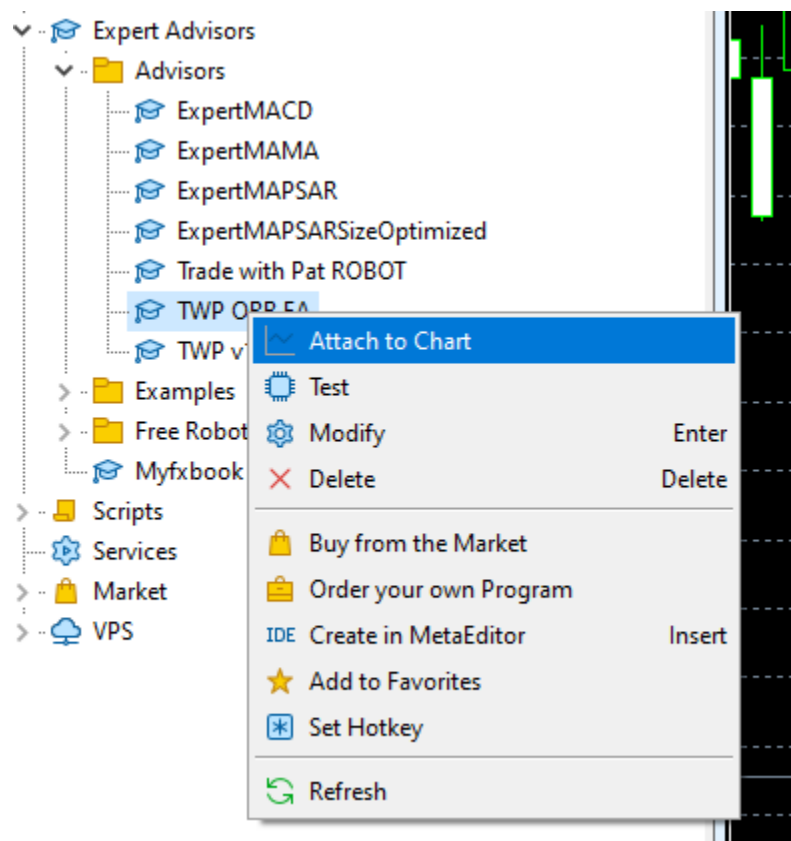
Drag and drop the TWP ORB EA.ex5 into MQL5 > EXPERTS > ADVISORS



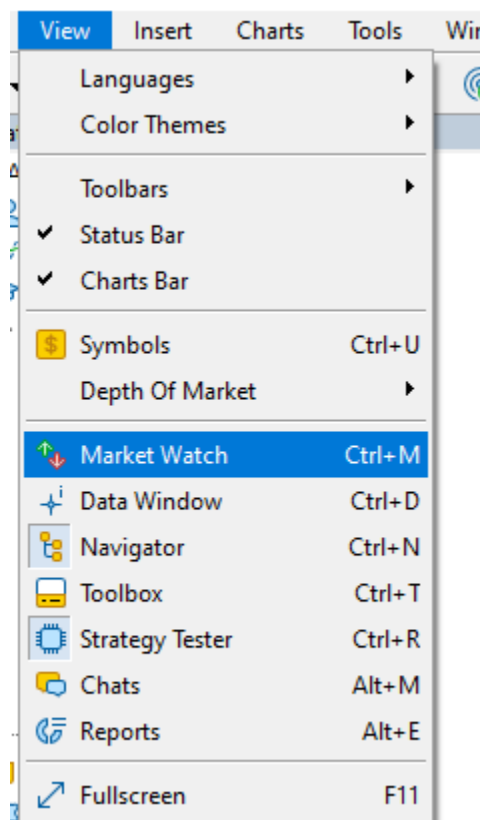
Click VIEW -> NAVIGATOR



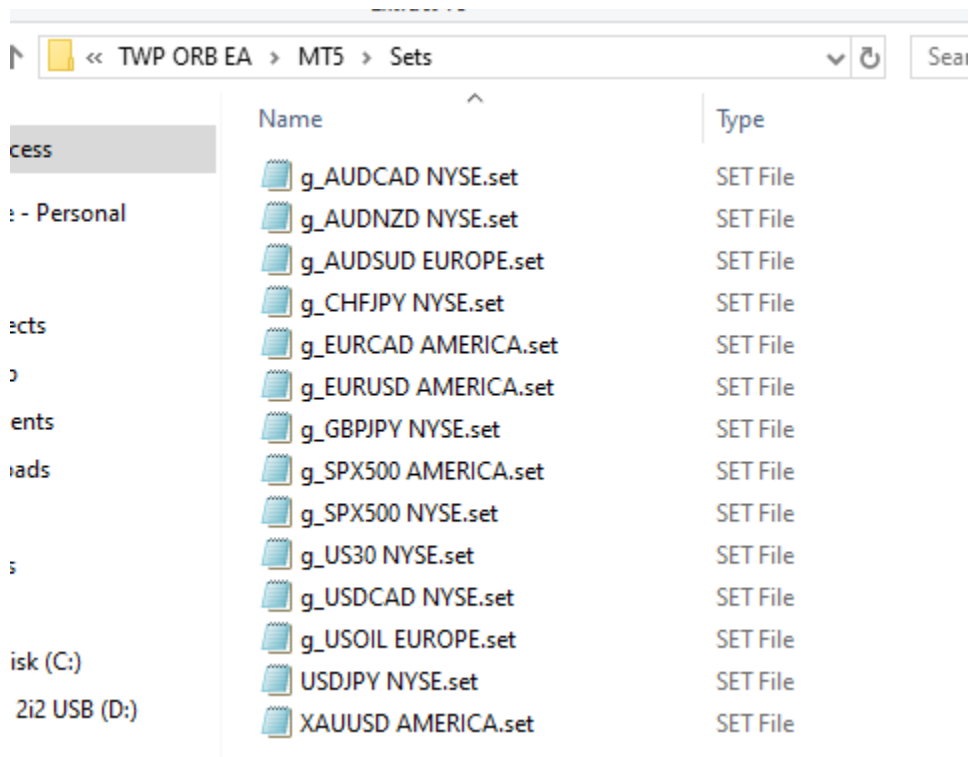
Open expert advisors folder in navigator



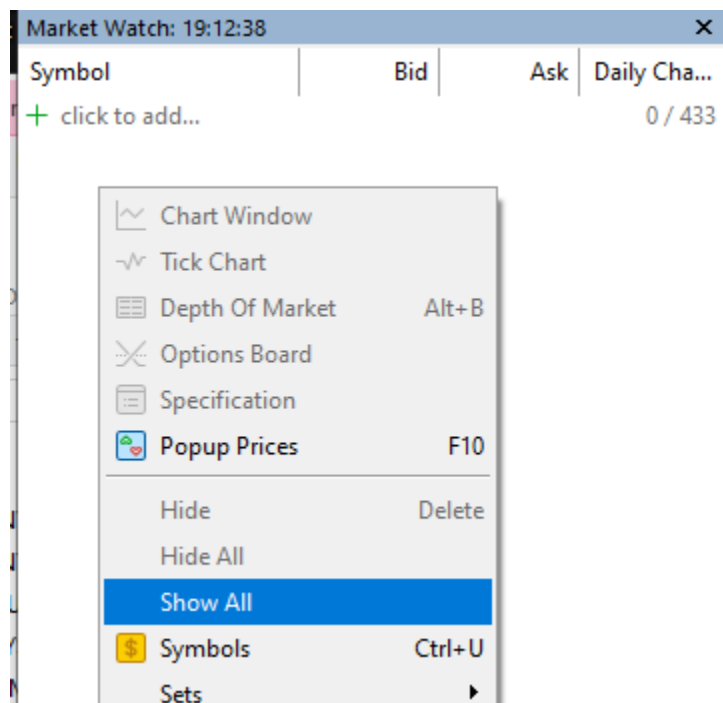
Right click attach to chart, or simply drag and drop onto chart



If you don't have a chart, go to VIEW -> MARKET WATCH



Look at the provided SET files and select the chart you want to trade.

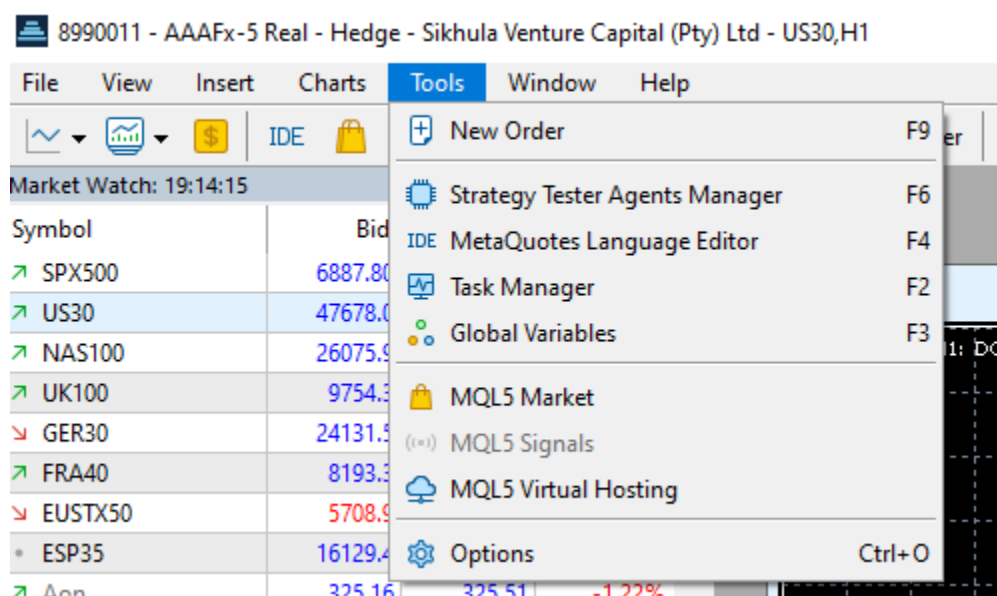


Right click show all in the market watch to show all assets you can trade

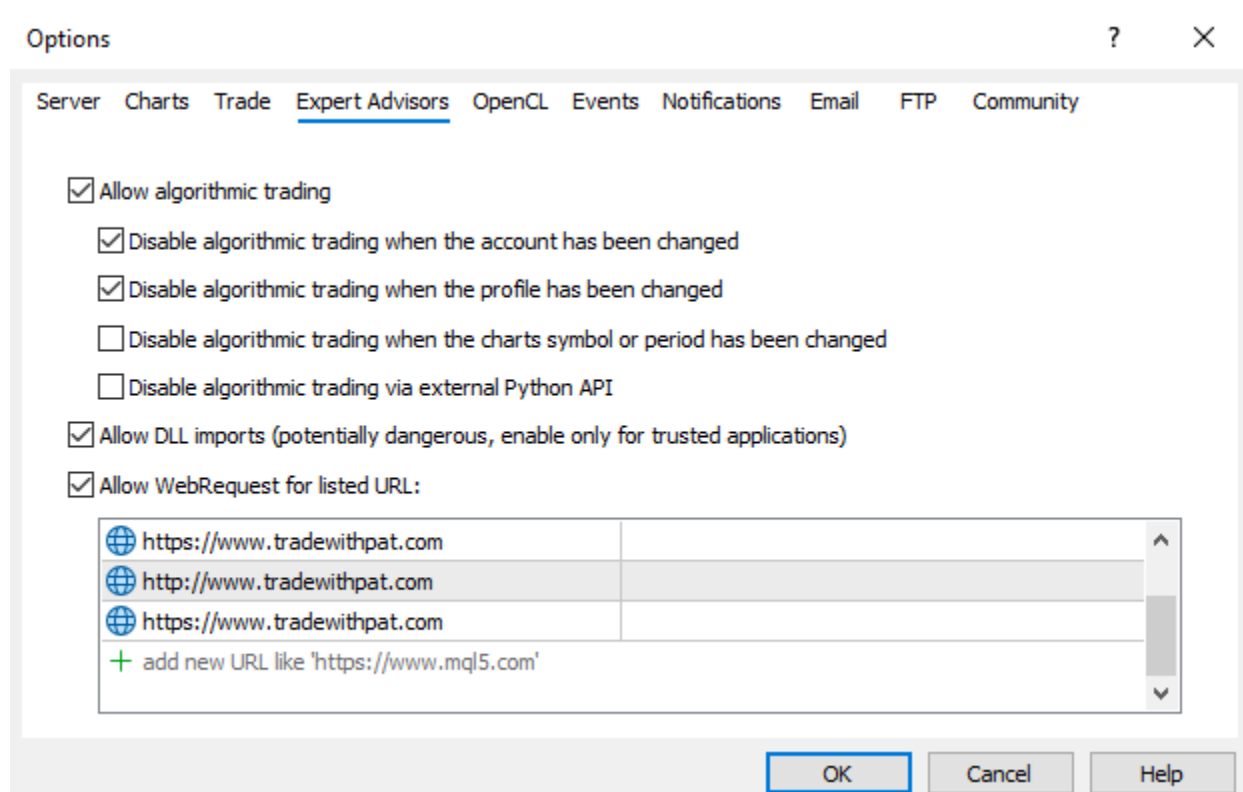


In this example I drag and dropped US30 into the open space on the right and now I have a US30 chart open

Now before we move to the next step we need to authenticate our account



Click TOOLS -> OPTIONS



Click Expert Advisors at the top

Select everything I have selected here and add 2 URLs exactly as I show now you can copy and paste:

<https://www.tradewithpat.com>

<http://www.tradewithpat.com>

Add these URLs and ALLOW webrequest for listed URL

Options

Server Charts Trade Expert Advisors OpenCL Events Notifications Email FTP Community

Server: AAAFx-5 Real

Login: 8990011

Password: ••••••••

☐ Enable proxy server

☒ Keep personal settings and data at startup

☒ Enable news

News languages: Auto select

Change Proxy... Change

OK Cancel Help

Then come back to the Server Tab at the top and you will want to COPY your Login

Options

Server Charts Trade Expert Advisors OpenCL Events Notifications Email

Server: AAAFx-5 Real

Login: 8990011

••••••••

☐ Enable proxy server

☒ Keep personal settings and data at startup

☒ Enable news

Undo

Cut

Copy

Paste

Delete

Right click copy

Now we are going to the [authentication page \(click\)](#)

Account Type	Account Number	Username	
Demo	13515125	wpx_tradewithpat	<button>Remove</button>
Demo	3243545	wpx_tradewithpat	<button>Remove</button>

In order to use the EA on a Live or Demo account you have to add your MT4/MT5 account number here.YOUR USERNAME IS CASE SENSITIVE - DO NOT MAKE ANY TYPOS You are a **Lifetime license - 6 account** with unlimited demo accounts.

Username:

Account Type: Real MT4/MT5 Account Number:

Submit

This is the authentication page.

Account Type: Real MT4/MT5 Account Number:

8990011

Real

Demo

Select account type either Real or Demo. If you get an error here, try adding the account as both demo and real to see if that fixes it.

Paste in the account number that you copied earlier and click submit.

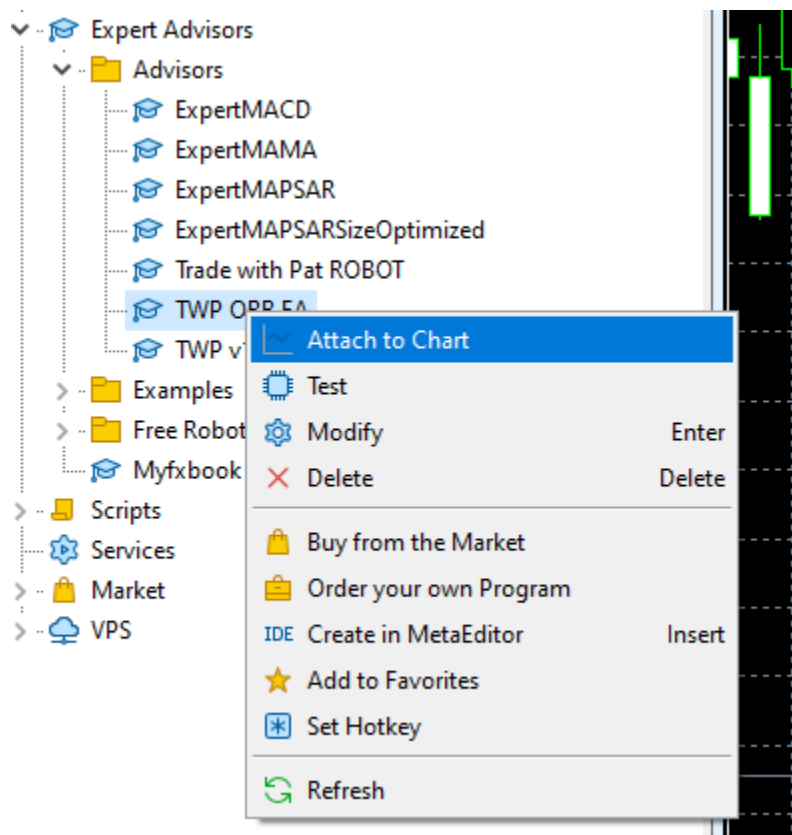
Account Type	Account Number	Username	
Real	8990011	wpx_tradewithpat	<button>Remove</button>
Demo	13515125	wpx_tradewithpat	<button>Remove</button>
Demo	3243545	wpx_tradewithpat	<button>Remove</button>

Now you can see the real account is authenticated.

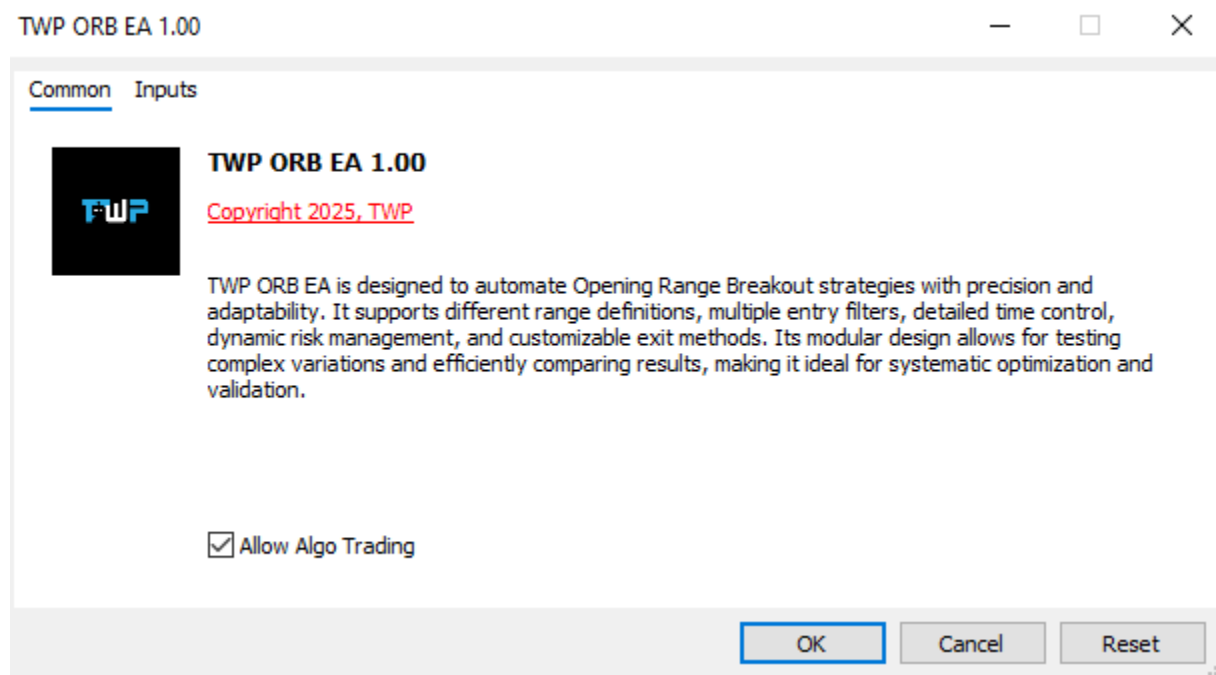
You can click REMOVE at any time, to remove that account, and add more.

You have unlimited demo accounts, and a specific amount of live licenses that you've purchased.

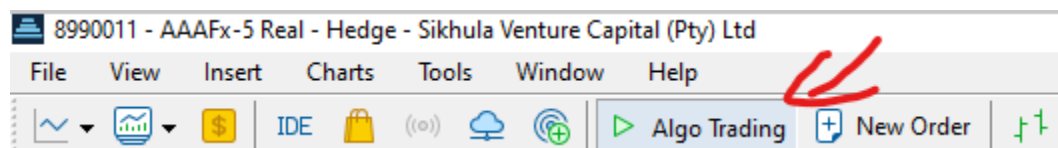
If you have 1 live license, you can remove and add a new live account as many times as you like, the licenses never disappear.



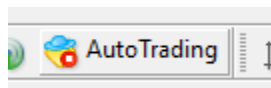
Now you can go back to the navigator and put the robot on your chart.



First start on the COMMON tab, and make sure you tick ALLOW ALGO TRADING. IN MT4 this will say ALLOW LIVE TRADING.



This button at the top of your screen will show like this if you have ticked this box. In MT4 it looks a little different.



But you want to make sure that's green, that's all.

TWP ORB EA 1.00

Common Inputs

Variable	Value
» Access	
ab - Username	Enter Your User Here
☰ - Do you accept TOS?	NO
ab - TOS (Terms of service)	https://www.tradewithpat.com/dtos/
- / - / Trades \ - \ -	
01 • Magic number	34232
☰ • Lots mode	Static
½ • Lots/Risk	0.01
☰ • SL mode	ATR
½ • SL	0.33
☰ • TP mode	SL ratio (RR)
½ • TP	1.0

Load Save

OK Cancel Reset

Then come to the INPUTS tab, here you will enter your username and accept the [Terms of Service](#).

My username is:

Username:
wpx_tradewithpat

This can be found on the authentication page.

Username:

wpx_tradewithpat

Account Type: Real ▾ MT4/MT5 Account Number:

Submit

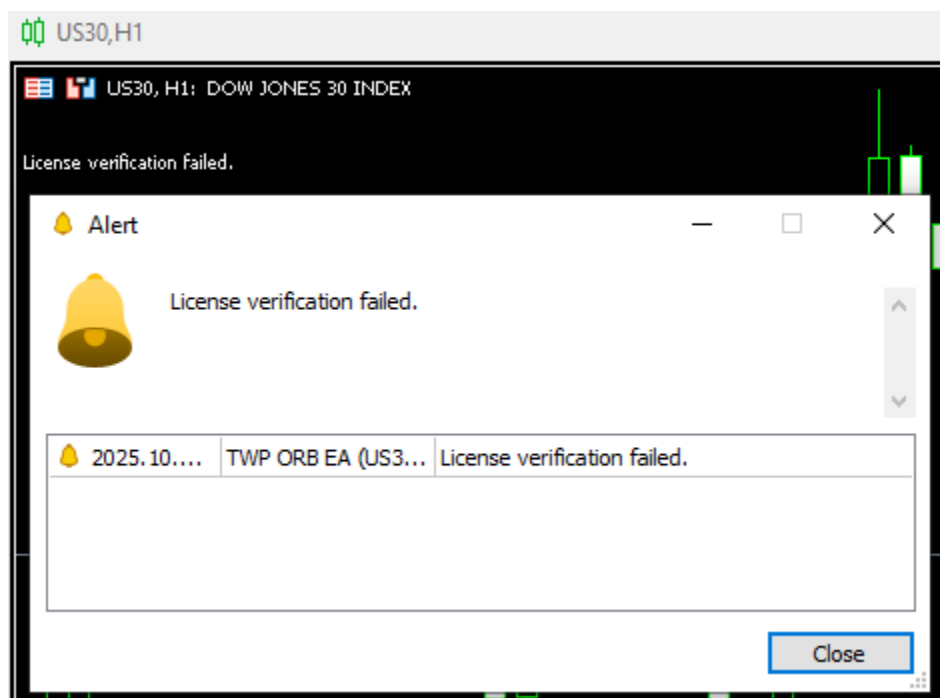
TWP ORB EA 1.00

Common Inputs

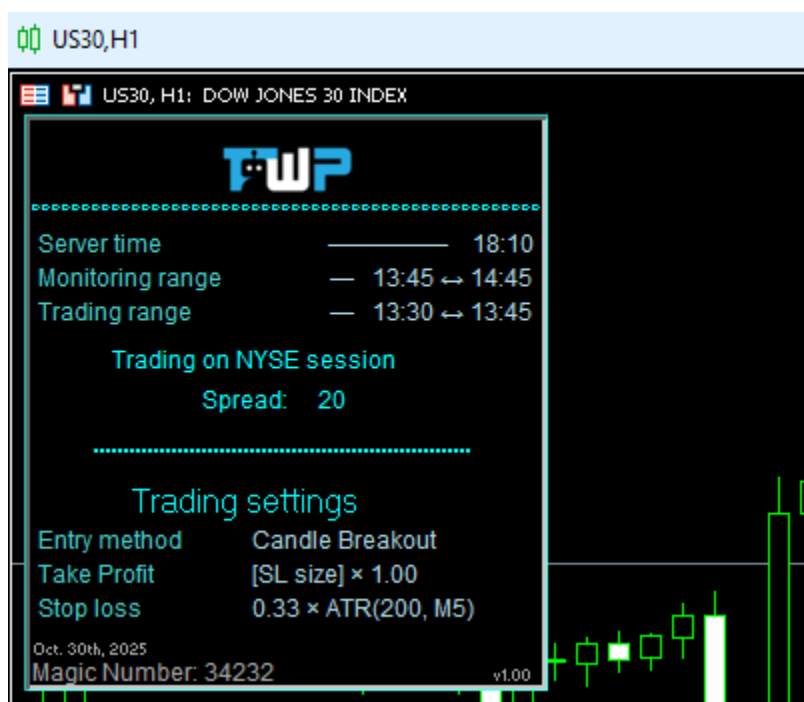
Variable	Value
» Access	
ab - Username	wpx_tradewithpat
- Do you accept TOS?	NO ▾
ab - TOS (Terms of service)	YES
	NO
- / - / Trades \ - \ -	

Then I enter my username.

You have to ENTER YOUR username, do not enter my username, and do not leave this field blank or you will get an error message.



That will look like this.



If you do it correctly it will look like this, and the robot will be ready to trade on your account.

Now remember, if you LOAD a NEW SET FILE, you will have to re-enter your username.

These are the main things you need to know to install the software. Now we will go into some more details for your further understanding of the system.

Step 3: Understanding the Dashboard

This is how the dashboard looks on the chart, there will be text explaining each feature.

TWP

Server time — 20:37

Monitoring range — 15:45 ↔ 16:45

Trading range — 15:30 ↔ 15:45

Trading on NYSE session

Spread: 9

Upcoming news — 22:30

Trading settings

Entry method Candle Breakout

Take Profit [SL size] × 1.00

Stop loss 0.33 × ATR(200, M5)

Oct. 28th, 2025
Magic Number: 34232 v1.00

Server time, update each minute

Ranges time, update when is necessary due DST

TWP

Server time — 20:40

Monitoring range — 15:45 ↔ 16:45

Trading range — 15:30 ↔ 15:45

Trading on NYSE session

Spread: 8

Upcoming news — 22:30

Trading settings

Entry method Candle Breakout

Take Profit [SL size] × 1.00

Stop loss 0.33 × ATR(200, M5)

Oct. 28th, 2025
Magic Number: 34232 v1.00

Update every tick
Became red if the current spread is higher than the max. allowed

TWP

Server time — 20:41

Monitoring range — 15:30 ↔ 15:45

Trading range — 15:45 ↔ 16:45

Trading on NYSE session

Spread: 9 (Max. = 7)

Upcoming news — 22:30

Trading settings

Entry method Candle Breakout

Take Profit [SL size] × 1.00

Stop loss 0.33 × ATR(200, M5)

Oct. 28th, 2025
Magic Number: 34232 v1.00

When the spread is RED, the robot won't trade. You want to avoid high spread conditions for long-term success as a trader, whether using a robot, or not so this is always important to monitor.

TWP

Server time — 20:43
Monitoring range — 15:45 ↔ 16:45
Trading range — 15:30 ↔ 15:45

Trading on NYSE session
Spread: 11 (Max. = 7)
Upcoming news — 22:30

Trading settings
Entry method Candle Breakout
Take Profit [SL size] × 1.00
Stop loss 0.33 × ATR(200, M5)

Oct. 28th, 2025
Magic Number: 34232 v1.00

'Upcoming news' may take a few seconds to update when the EA is started.
It displays the time of the next news event

TWP

Server time — 20:45
Monitoring range — 15:45 ↔ 16:45
Trading range — 15:30 ↔ 15:45

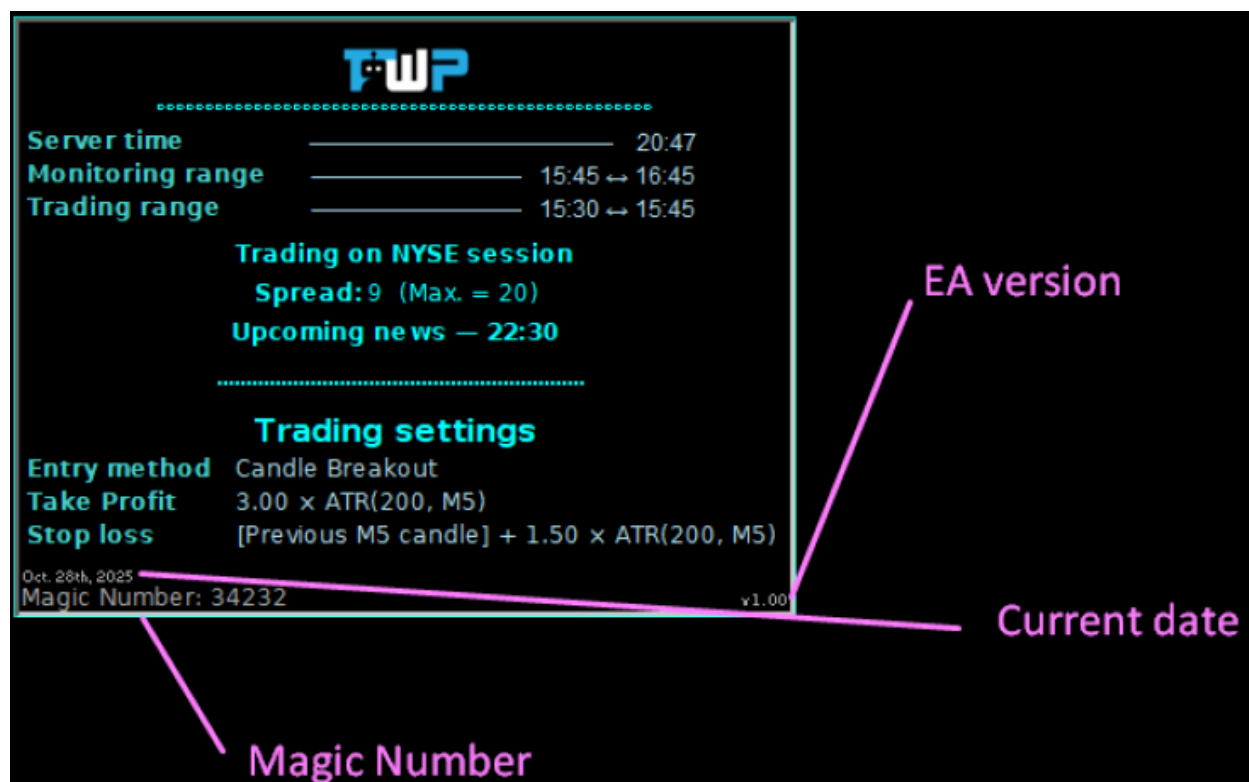
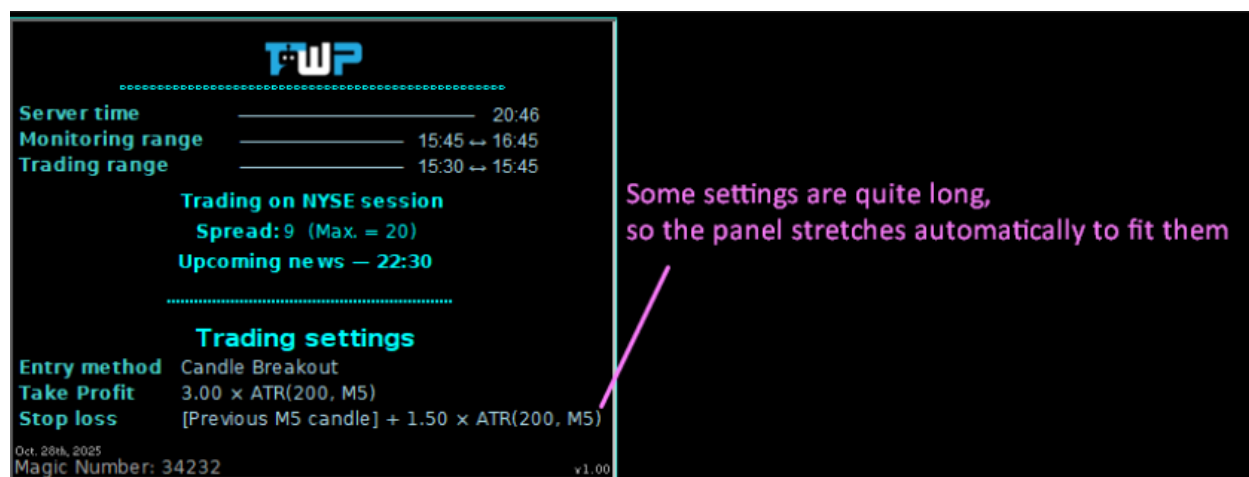
Trading on NYSE session
Spread: 9 (Max. = 20)
Upcoming news — 22:30

Trading settings
Entry method Candle Breakout
Take Profit [SL size] × 1.00
Stop loss 0.33 × ATR(200, M5)

Oct. 28th, 2025
Magic Number: 34232 v1.00

Displays the entry, TP, and SL settings.

After this section, there will be more details about each setting.



If you are running multiple charts the magic number has to be different on every chart. So here it's 34232, you can do 34231 or 34125125125, whatever you prefer. Though, we recommend starting with 1 pair at a time per platform.

TWP

Server time _____ 20:49

Monitoring range _____ 15:45 ↔ 16:45

Trading range _____ 15:30 ↔ 15:45

Trading on NYSE session

Spread: 8 (Max. = 20)

Upcoming news — 22:30

Trading settings

Entry method Candle Breakout

Take Profit $3.00 \times \text{ATR}(200, \text{M5})$

Stop loss $[\text{Previous M5 candle}] + 1.50 \times \text{ATR}(200, \text{M5})$

Active filters:

- ▶ EMA(200, M5) [1.16548]

Oct. 28th, 2025

Magic Number: 34232 v1.00

If any filter is enabled,
new information will appear showing
which filters are active and their current values

TWP

Server time _____ 20:51

Monitoring range — 15:45 ↔ 16:45

Trading range — 15:30 ↔ 15:45

Trading on NYSE session

Spread: 9

Trading settings

Entry method Candle Breakout

Take Profit $[\text{SL size}] \times 1.00$

Stop loss $0.33 \times \text{ATR}(200, \text{M5})$

Active filters:

- ▶ EMA(200, M5) [1.16549]
- ▶ Supply & Demand
[0.00000 | 0.00000]
[0.00000 | 0.00000]
- ▶ S&R [1.16560 | 1.16616]

Oct. 28th, 2025


Magic Number: 34232 v1.00

EMA value

Supply High | Supply Low

Demand High | Demand Low

Support | Resistance



The screenshot displays the FWP trading interface. At the top, it shows the server time as 20:58, monitoring range from 15:30 to 15:45, and trading range from 15:45 to 16:45. It indicates trading on the NYSE session with a spread of 9. Below this, the trading settings are listed: entry method is Candle Breakout, take profit is [SL size] x 1.00, and stop loss is 0.33 x ATR(200, M5). Active filters include EMA(200, M5) at 1.16549, Supply & Demand at [0.00000 | 0.00000], and S&R at 1.16560 | 1.16616. The date is Oct. 28th, 2025, and the magic number is 34232. At the bottom, a table shows the current capital as \$16401.0, target capital as \$17000.0, minimum daily capital as \$14760.9, and minimum capital limit as \$14760.9. A pink arrow points from the text on the right to the capital table.

Trading on NYSE session
Spread: 9

Trading settings
Entry method: Candle Breakout
Take Profit: [SL size] x 1.00
Stop loss: 0.33 x ATR(200, M5)

Active filters:
▶ EMA(200, M5) [1.16549]
▶ Supply & Demand [0.00000 | 0.00000]
▶ S&R [1.16560 | 1.16616]

Oct. 28th, 2025
Magic Number: 34232 v1.00

Current capital	\$16401.0
Target capital	\$17000.0
Min. daily capital	\$14760.9
Min. capital limit	\$14760.9

The 'Advanced Risk Management' will create a new session. It displays the current capital (in equity), the target, the daily drawdown limit, and the total drawdown limit.

The EA automatically detects the account currency and uses the corresponding symbol (\$, £, ¥, etc.)












Step 4: Understanding the Parameters (Settings)

Now, we are going to go through every single one of the ea settings so you understand exactly how the robot works & the logic behind it.

TWP ORB EA 1.00

— □ ×

Common Inputs

Variable	Value
» Access	
ab - Username	wpx_tradewithpat
 - Do you accept TOS?	YES
ab - TOS (Terms of service)	https://www.tradewithpat.com/dtos/
- / - / Trades \ - \ -	
01 • Magic number	34232
 • Lots mode	Static
1/2 • Lots/Risk	0.01
 • SL mode	ATR
1/2 • SL	0.33
 • TP mode	SL ratio (RR)
1/2 • TP	1.0
01 • ATR period	200
 • ATR Timeframe	5 Minutes
- / - / Strategy \ - \ -	
 × Trading session	NYSE
 × Region to be considered for DST	North America
01 × Minutes for range calculation	15
01 × Stop looking for entries X minutes af...	60
01 × Max. holding trade in minutes (0 = ...	0
01 × GMT shift of broker time (USED ONL...	3
 × EA timeframe	5 Minutes
 × Entry mode	Breakout
1/2 × Retest range level	50.0
1/2 × Retest max. body candle (ATR)	1.0
1/2 × Breakout min. body candle (ATR)	1.0
01 × Supply&Demand min. candles	3
- / - / Filters \ - \ -	
01 • Max trades at a time	1
01 • Max trades daily	1
01 • Max spread (0=no limit)	0
 • Filter EMA	false
01 • Filter EMA period	200
 • Filter S/R	false
01 • Filter S/R period	200
1/2 • Filter S/D min. distance (ATR)	0.05

Load

Save

OK

Cancel

Reset

>>Access

- Username, TOS and TOS link.Login and TOS

Straight forward, this is just where you login.

>>Trades

- Magic number

Remember to change this if you are going to use more than one EA or chart on the same account.

- Lots Mode

Static▶

Each trade will use the fixed value defined in “Lots/Risk” as the trading volume.

▶ Dynamic (% of balance)

It will use the value defined in “Lots/Risk” to calculate the risk in account currency based on the highest equity of the account since the EA was activated. Ideal for compounded interest.

▶ 1 Lot per X balance

It will divide your balance by the number defined in “Lots/Risk.” For example, if your balance is 10,000 and you set “Lots/Risk” to 1,000, the trading volume will be $[10,000 \div 1,000 = 10 \text{ lots}]$. If you want to use 0.01 lot for each \$1,000 in capital, set “Lots/Risk” to 100,000. This also works for compounded interest.

- SL mode (Stop loss method)

Points▶

Simple: just set the desired SL size in points (not pips).

ATR▶

Simple: just set the desired SL size in ATR multiplier (not ATR period, not yet).

Range size ►

The EA will obtain the range size, which you can use as a reference for the SL. This value will be multiplied by the number set in "SL."

Previous candle + Points ►

Based on the EA's timeframe, this option will use the High or Low of the previous candle and add the number of points defined in "SL".

Previous candle + ATR ►

Based on the EA's timeframe, this option will use the High or Low of the previous candle and add the points resulting from $[ATR \times "SL"]$.

Last swing + Points ►

Based on the EA's timeframe, last swing + points.

Last swing + ATR ►

Based on the EA's timeframe, last swing + ATR.

Last Swing = The "Last Swing" is the most recent price reversal point identified !!on the chart, represented by the last valid fractal – a significant high or low where a change in the price movement direction occurred.

Range opposite + Points ►

If you're entering at the top of the range, it will use the bottom of the range plus the points defined in "SL" and vice versa.

Range opposite + ATR ►

If you're entering at the top of the range, it will use the bottom of the range plus the points resulting from $[ATR \times "SL"]$ and vice versa.

- SL

Set here the points or ATR/Range size multiplier to calculate the SL size.

- TP mode

Choose the TP calculation method from [SL ratio (which is the SL size \times "TP"), ATR multiplier, or points].

- TP

Set ration, ATR multiplier or points to calculate the TP size.

- ATR period & ATR Timeframe

Set the ATR period and ATR timeframe (which is not the same as the EA's or chart's timeframe).

- Trading session

Choose which trading session will mark the beginning of the monitoring range.

- Region to be considered for DST

Select if and which DST zone the EA should consider when calculating the trading session start time.

- Minutes for range calculation

Once the trading session begins, the number defined here will determine for how many minutes the EA will monitor and update the range before trading.

- Stop looking for entries X minutes after range completion

Once the "Minutes for range calculation" has finished, the number defined in this input will determine for how many minutes the EA will look for trades within the current range.

- Max. holding trade in minutes (0 = disabled)

A simple input to determine for how many minutes each trade is allowed to remain open.

- GMT shift of broker time (USED ONLY IN TESTER!)

MetaTrader cannot get the true GMT while backtesting, and the historical data of some brokers may be unreliable if used solely as a reference to calculate GMT automatically. Therefore, it is safest for the user to set the GMT manually. However, be aware that

some brokers, such as AAAFx MT5, have changed their GMT at certain points in past data.

- EA timeframe

Timeframe used by the EA. The chart's timeframe is irrelevant.

>>Strategy

- Entry mode

Breakout ►

Entry occurs after the candle of the EA's timeframe closes outside the range. Trade positioned in the direction of the breakout. The breakout candle must have a body larger than the value defined in "Breakout min. body candle (ATR)" (which can be disabled by setting it to 0).

► Instant Breakout

Entry occurs when the current price touches the range extremity. The trade is positioned in the direction of the side of the range that was tested.

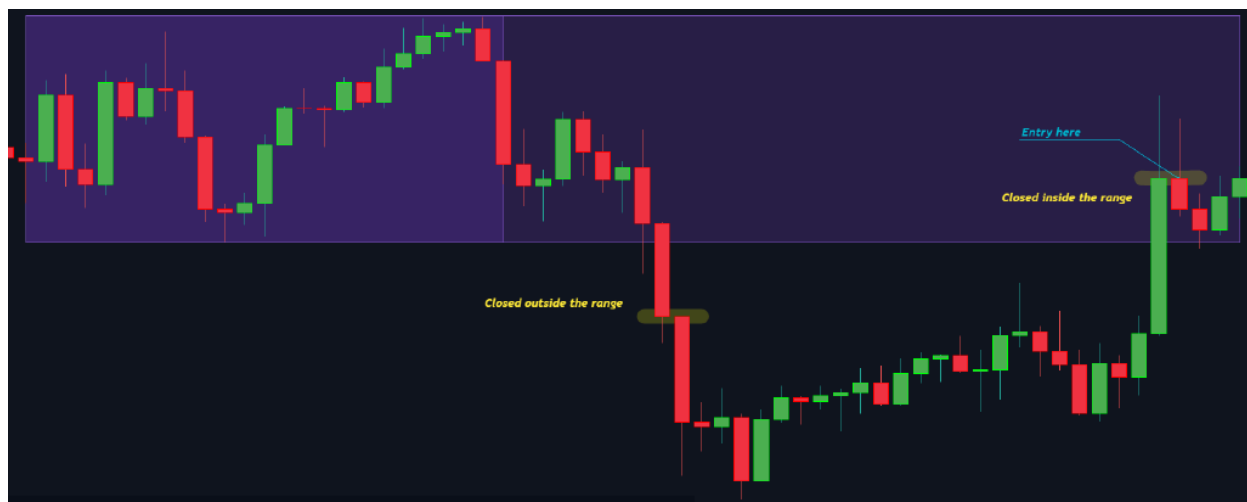
Retrace ►

Entry occurs after the candle of the EA's timeframe closes outside the range. Trade positioned in the opposite direction of the breakout. The breakout candle must have a body larger than the value defined in "Breakout min. body candle (ATR)" (which can be disabled by setting it to 0).

► Instant Retrace

Entry occurs when the current price touches the range extremity. The trade is positioned in the opposite direction of the side of the range that was tested.

► Retest range same direction



Entry occurs when the candle closes outside the range then close inside again. Trade positioned in the direction of the breakout. (Sell scenario shown in the image)

► Retest range opposite direction

The same logic of the 'Retest range same direction', but the trade will be the opposite direction. Trade positioned in the same direction on the retest. (Buy scenario shown in the image)

► Retest range level X

The entry occurs when the previous candle opens above a dynamic level and closes below that same level (opposite for sell). Unlike other retest modes that use Range_HIGH and Range_LOW, this one trades on an internally calculated level within the range, allowing entries at customized positions between Range_HIGH and Range_LOW. It does not require a confirmed prior breakout, focusing solely on the price behavior relative to the defined level.

Entry buy visual example (level=30%):



Supply & Demand ►

Buy if the low of the previous candle is below Demand_High and the close is above Demand_High.

Sell if the high of the previous candle is above Supply_Low and the close is below Supply_Low.

- Retest range level

Set the level (%) to be use as reference to 'Retest range level X'

- Retest max. body candle (ATR)

Set the maximum candle body size (in ATR) for "Retest Range ____" entry methods.

- Breakout min. body candle (ATR)

Set the minimum size in ATR for the breakout candle for breakout entry methods. 0 = disabled.

- Supply&Demand min. candles

Set the minimum to be used on S&D logic.*

>>Filters

- Max trades at a time

Limit the number of trades opened at a time by the EA. Doesn't consider other trades.

- Max trade daily

Limit the number of trades opened per day by the EA. Doesn't consider other trades.

- Max spread (0=no limit)

Limit the spread when opening a trade (doesn't affect grid trades).

- Filter EMA + Filter EMA period

Enable or disable the EMA filter and set its period.

- Filter S/R + Filter S/R period

Enable or disable the S/R filter and set its period.

- Filter S/R min. distance (ATR)

Set the minimum distance from the previous S/R .

S/R Filter = S/R was implemented simply as the last Bill Williams Fractals !!price. If the current price is too close to the fractal level (configured by [Filter S/R min. distance (ATR)]), the trade will not be opened.

- Filter Supply&Demand

Enable or disable the S&D filter.

>>News

- Enable news filter

Enable or disable news filter.

- How to mark upcoming news on the cart

The user can choose between a vertical line, a vertical line plus a drawn zone for the filtering period, or nothing to mark upcoming news on the chart.

- Non-trading zone color

Set the color of the filtering period range, if enabled.

- Fill non-trading zone

Enable or disable filling of the non-trading zone.

- Low News + Moderate News + High News

Enable or disable the Low impact, moderate impact and high impact news filtering.

- Disable before X minutes

Set the number of minutes before the news to stop trading.

- Disable after X minutes

Set the number of minutes after the news to continue trading.

- Currency to be checked

Select the currencies impacted by the news to be considered.

- Keywords to check (empty=all)

Filter news by keywords. For example, you can filter only "CPI" news by typing "CPI" here.

>>Various

- Lots multiplier after loss

Risk multiplier per trade. If you are risking 0.1% per trade and set 2.0 as the multiplier, after a loss your risk will be 0.2%, and after another loss it will be 0.4%. It also works with fixed lot settings, but does not work with grid enabled.

- Partial Close (% TP to trigger, 0=disabled)

Set the percentage of the TP at which the partial close will be activated. For example, if configured to 50% and the TP size is 200 points, when the trade reaches 100 points in profit, the partial close will be executed.

- Partial Close (% lots to close)

Set the percentage of the lot size of the trade to be executed as a partial close.

- Partial close set SL to BE

Enable or disable. If enabled, the Stop Loss will be moved to the trade's opening price.

- Trailing stop mode

Disable Trailing Stop, enable using the %TP as trigger (similar to Partial Close) or enable using the HiLo (Highest high or Lowest Low) as trailing stop.

- Trailing Trigger (% TP)

Like the Partial Close logic, set the proportion between the entry price and the Take Profit (in percentage) to trigger and activate the trailing stop.

- Trailing size (% TP)

Using the same logic as the previous input, you will now set the size of the trailing. For example, if a trade has a TP of 200 points, a trailing trigger of 25%, and a trailing size of 50%, the trailing will start updating the SL when the price reaches $25\% \times 200 = 50$ points in profit, and the new SL will be $50\% \times 200 = 100$ points away from the highest profit.

- HiLo period

If the trailing mode has "HiLo" selected, the EA will check the highest high or lowest low of the number of candles configured here to use as the SL. It is important to make clear that the SL will never be set farther from the TP.

>>Grid

- Enable grid

Enable or disable grid.

- Trade only if there is no other open trade

This function, if enabled, will start a new trade only if there are no other trades open on your account. The purpose is to guarantee sufficient equity for the grid levels.

- Grid levels distance multipliers

Given an SL size, the grid will take this value and multiply it by the values entered in this input. For example, if a trade has a stop loss of 200 points, and the string entered is "1.00, 1.50, 1.00, 2.00":

The first grid level will be $200 \times 1.00 = 200$ points.

The next level will be $200 \times 1.00 \times 1.50 = 300$ points from the previous grid level.

The third level will be $200 \times 1.00 \times 1.50 \times 1.00 = 300$ points from the previous grid level.

The fourth level will be $200 \times 1.00 \times 1.50 \times 1.00 \times 2.00 = 600$ points from the previous grid level.

For subsequent levels, the last value of the string will be used repeatedly, and the distance will increase indefinitely. To limit the multiplication, place 1.00 at the end of the string.

- Grid volume multiplier

The same logic as the "Grid levels distance multipliers", but applied to the volume of the trades. It is important to make clear that the string cannot be optimized, so anyone who wants to optimize these two functions will need to choose reasonable values to use as static.

>>Advanced Risk Management

- Enable Advanced Risk Management

Enable or disable this function, which is designed to help prop traders comply with prop firms rules.

- Maximum account equity

Set the maximum equity. Once your account reaches this equity, all trades will be closed and the EA will stop trading.

- Max daily drawdown

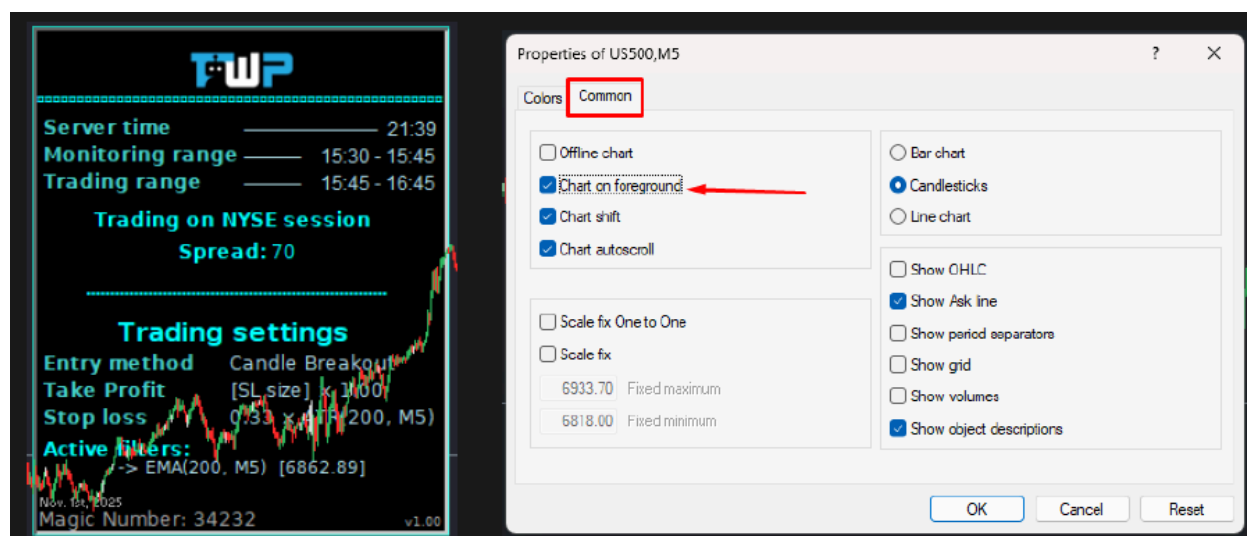
Set the maximum allowed drawdown in percentage. Once the EA is started, it will actively monitor the account equity. If the current drawdown reaches the percentage set here, the EA will close all trades and stop trading for the day.

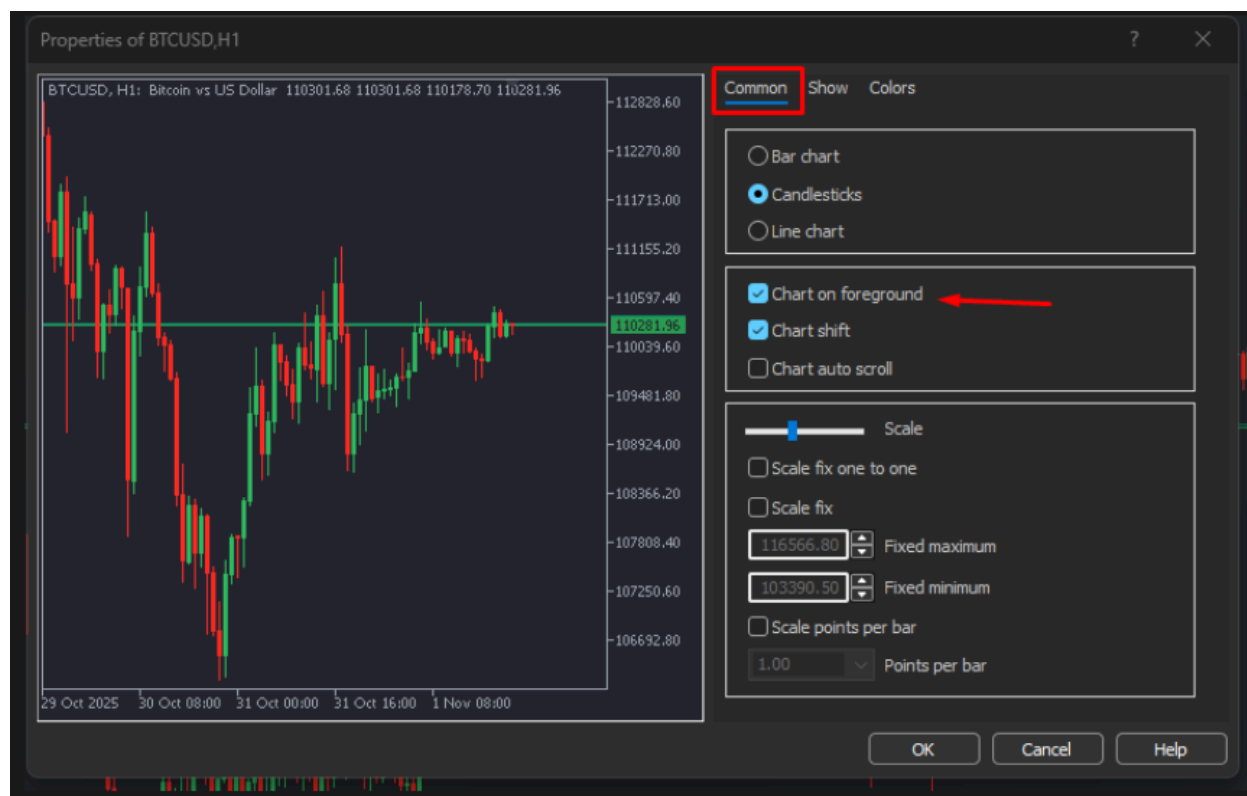
- Max overall drawdown

Set the maximum allowed drawdown in percentage. Once the EA is started, it will actively monitor the account equity. If the current drawdown reaches the percentage set here, the EA will close all trades and stop trading.

ADDITIONAL:

If the chart is overlapping the dashboard, disable "Chart on Foreground" by pressing F8
→ Common





- Using the correct GMT in backtests is crucial. Some brokers have changed their GMT in the past, so long backtests may involve multiple GMT settings. Make sure you are certain about the GMT used in the selected historical data.
- A little more about grid logic: The grid targets a fixed profit. If the TP is $2 \times \text{ATR}$, the grid adjusts the TP so that, after adding and subtracting all grid levels and swap costs, the net profit is as close as possible to the initially calculated value ($2 \times \text{ATR} \times \text{volume}$). For example, if the first trade target is \$10, the EA sets TPs considering all grid trades and swap so the final result is as close as possible to \$10
- Prop firm sets: It's most reasonable to guide users to create their own sets using the "Advanced Risk Management" function to set target and drawdown limits. There are always slippages, so the maximum drawdown set should be below the funded account's drawdown limit.
- S&D logic: S&D is defined as a sequence of candles (set by "Supply&Demand min. candles") followed by an opposite-direction candle whose close is higher/lower than the highest/lowest close of the sequence. The zone is defined by the High↔Low of this opposite candle.

-
- The chart's timeframe does not matter.

This is the end of the guide. More videos will be added to the members area, and our discord over time as we push forward with this incredible robot project.

Trade with Pat ROBOT

Installation Guide (MetaTrader 4 & 5)